



Adelaide Wind Project

Community Liaison Committee
May 8, 2014

Adelaide Wind Project Community Liaison Committee

Agenda

- **Safety Moment** (Jason Weir)
- **Project Team Review**
- **Contact Information**
- **Project Map and Transportation Plan**
- **Project Schedule**
- **Construction Details**

Adelaide Wind Project Community Liaison Committee

Safety Moment – Construction Traffic



Adelaide Wind Project Community Liaison Committee

Project Team:

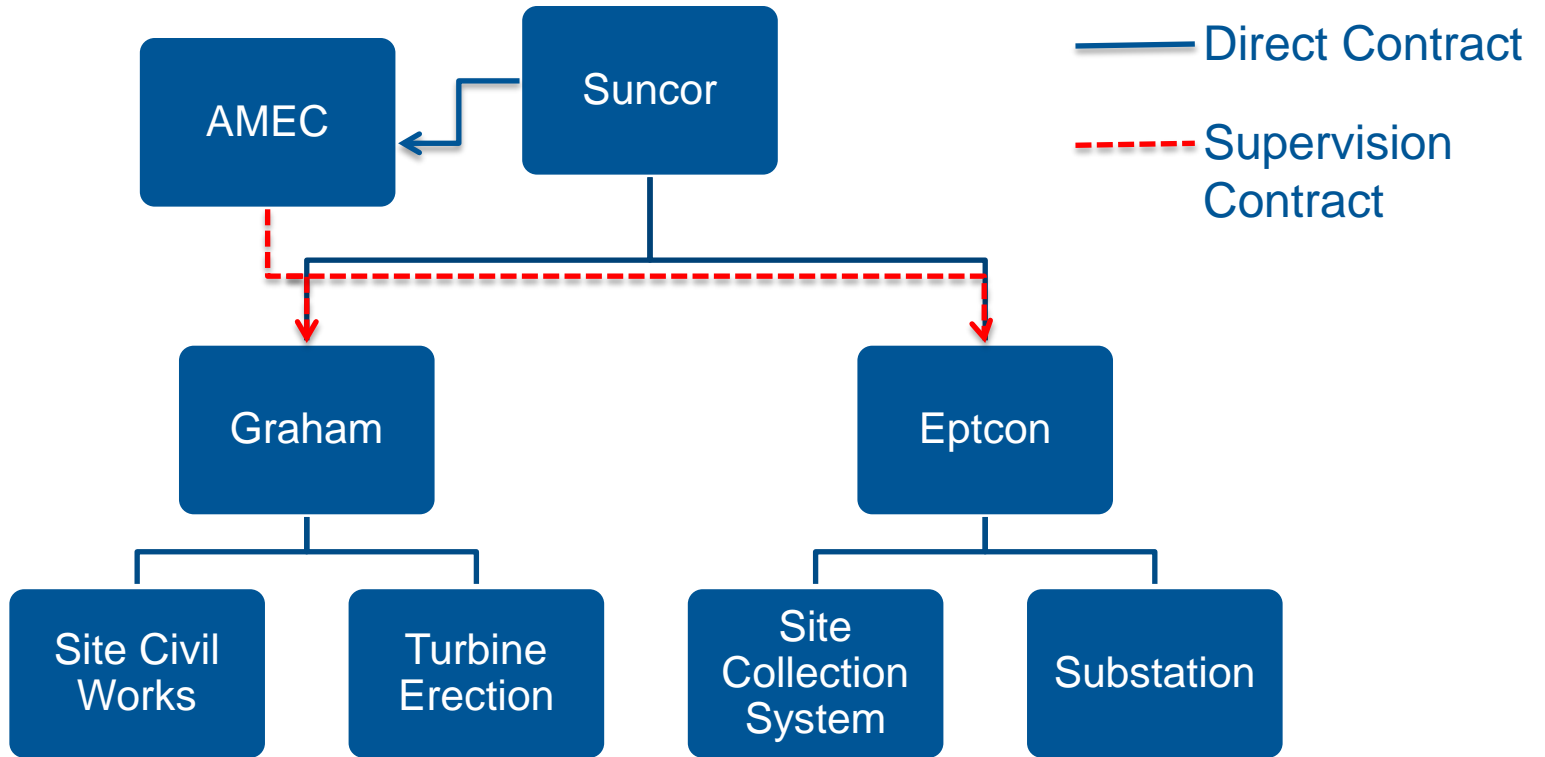
- **Suncor**
 - **Development Team** is responsible for site development, permitting and regulatory compliance
 - **Major Projects Group** is responsible for managing detailed engineering and construction
 - **Operations Group** is responsible for long term operations of facility
- **AMEC**
 - AMEC has completed detailed engineering
 - Will be Construction Management on site
 - Manage and supervise all subcontractors
 - Ensure facility is built according to design
 - Responsible for Site Safety

Adelaide Wind Project Community Liaison Committee

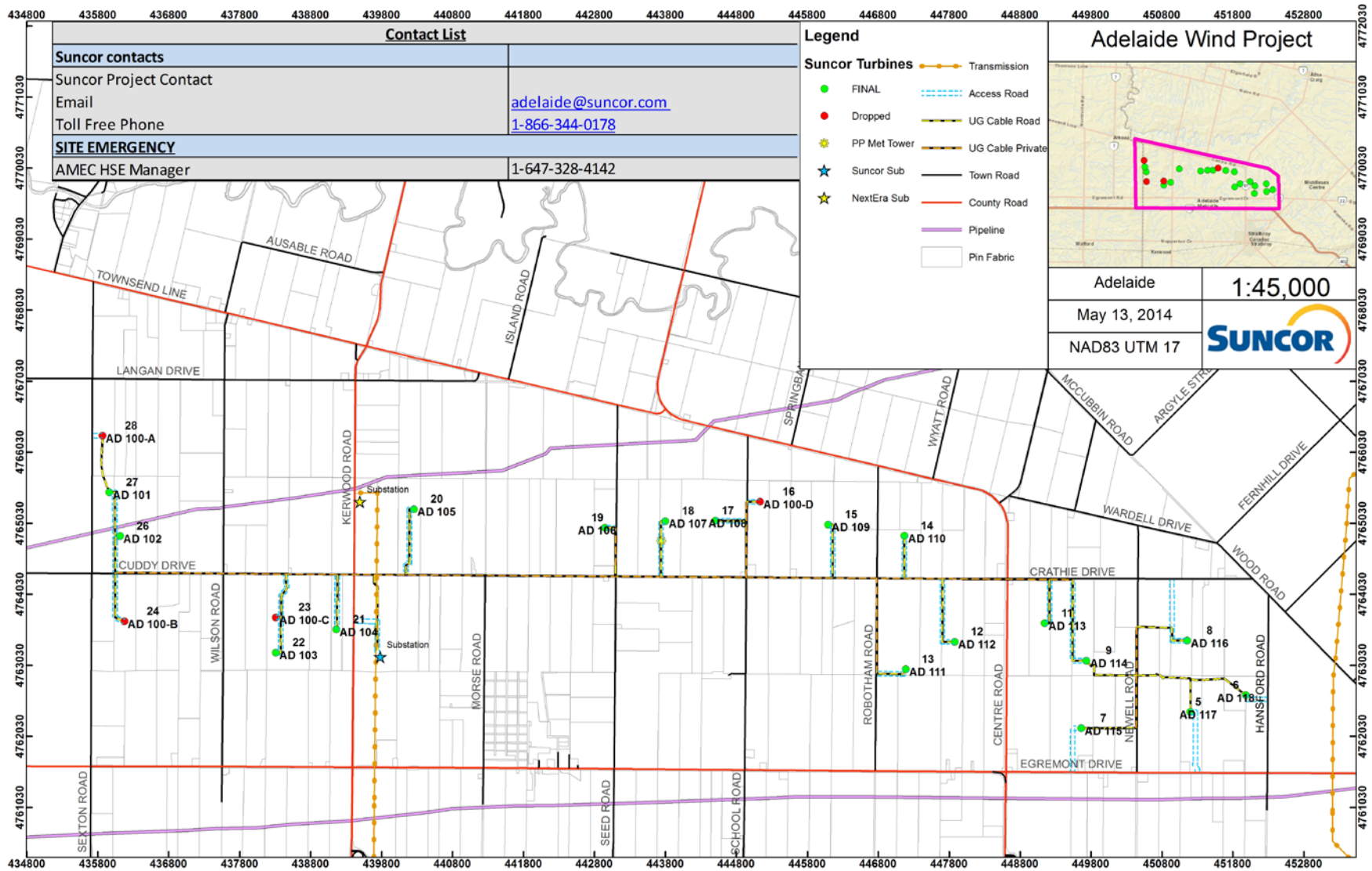
On Site Contact Information

<u>Contact List</u>	
Suncor contacts	
Suncor Project Contact	
Email	adelaide@suncor.com
Toll Free Phone	1-866-344-0178
<u>SITE EMERGENCY</u>	
AMEC HSE Manager	1-647-328-4142

Adelaide Wind Project – Construction Arrangement



Adelaide Wind Project Community Liaison Committee - Site Map



Adelaide Wind Project Community Liaison Committee

Project Schedule

Activity	2014							
	May	June	July	August	September	October	November	December
Project Survey								
Mobilization & Start Construction								
Construct Entrances & Access Roads								
Construct Turbine Foundations								
Construct Substation								
Install Collection System								
Turbine Installation								
Substantial Completion								
Site Reclamation								

- **Light Construction work will begin in end of May with construction start planned for June 2**
- **Turbine Components will start arriving Mid August**

Adelaide Wind Project Community Liaison Committee

Project Schedule



Civil Works



Electrical Works



Turbine Supply



Main Component Transportation



Turbine Installation

Adelaide Wind Project Community Liaison Committee

Construction Activities

- First activity will be creating entrances off of road right of ways
- Access Road and turbine foundations will be next

Adelaide Wind Project Community Liaison Committee

Access Road



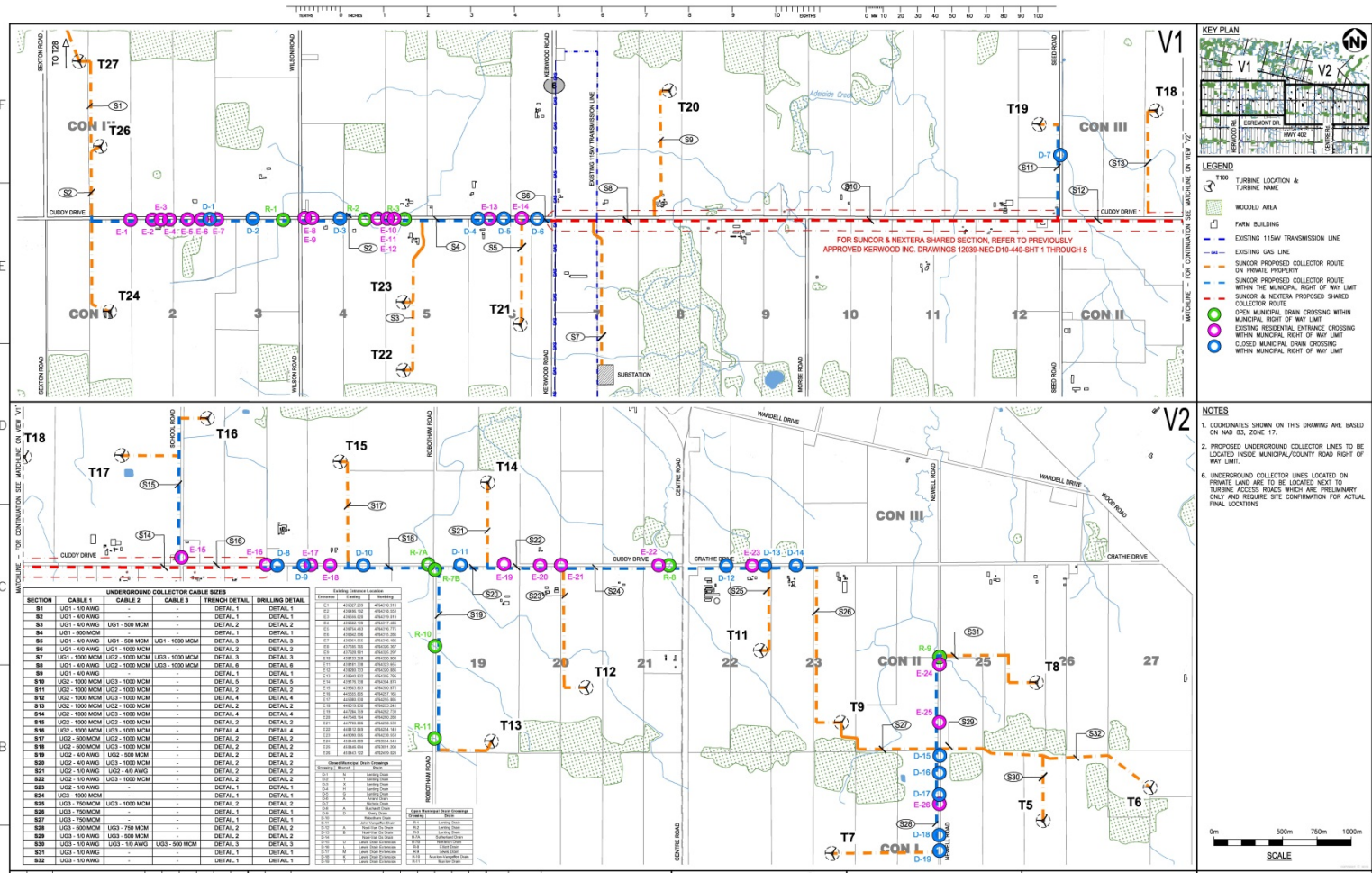
Adelaide Wind Project Community Liaison Committee

Turbine Foundation



Adelaide Wind Project Community Liaison Committee

Collection System Installation



Adelaide Wind Project Community Liaison Committee

Collection System Installation



Adelaide Wind Project Community Liaison Committee

Collection System Installation



Adelaide Wind Project Community Liaison Committee

Turbine Transportation



Adelaide Wind Project Community Liaison Committee

Turbine Installation



Adelaide Wind Project Community Liaison Committee

Turbine Installation



Adelaide Wind Project Community Liaison Committee

Site Reclamation





Appendix
